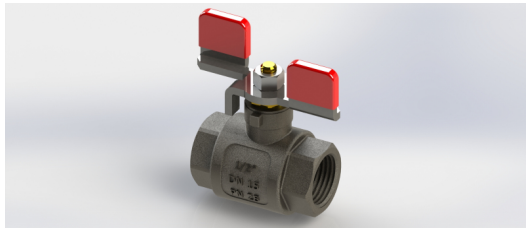




# Medical gas devices



## Shut-off valve

### Product description

The service shut-off valves are necessary to shut off each riser, each branch, each loop of a medical and empty gas system; the purpose of interrupting the supply line of the flow of each specific gas is to proceed with any maintenance

or interventions downstream of the valve itself, the valve can have dimensions from 3/8" up to 2"; together with the valve it is possible to purchase separately fittings in three pieces for pipes to be welded from Ø 10 mm up to Ø 54 mm.

Starting from the Ø 3/4" valve, the three-piece fittings are equipped with O-Rings for a better seal under pressure.

All materials are oxygen compatible, supplied clean and free from oil, grease or dust.

### Normatives

UNI EN ISO 15001

### Technical data

CODE	VALVE DIMENSIONS	P. max
H0650	3/8"	63 bar
H0651	1/2"	50 bar
H0652	3/4"	50 bar
H0654	1"	45 bar
H0655	1" 1/4	30 bar
H0656	1" 1/2	25 bar
H0657	2"	20 bar