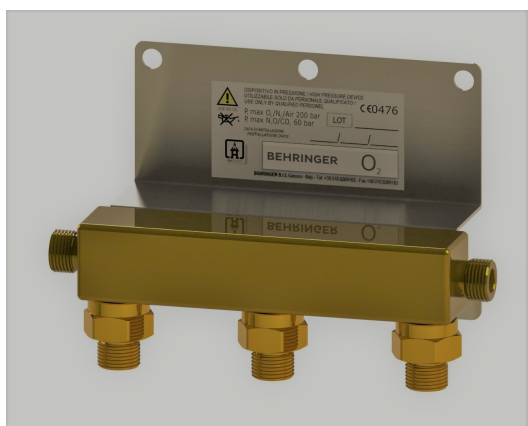


Marine and industrial plant engineering



Central ramp with non-return valve

Product description

Cylinder connection ramp made with a single brass manifold, with two or three places; specific gas connection; non-return valve built-in in the inlet connection.

It is made of materials compatible with the gases and applicable standards in medical gas field.

The identification takes place through the indication of the name and/or symbol of the supplied gas and the production batch stamped on the manifold.

The inlet and outlet connectors are made of brass with gas specific threads as per table.

The wall fixing bracket is in galvanized steel.

Components

Body in brass.

Inlet connection with non return valve in brass.

Inox plate.

Maintenance kit

CODE	DESCRIPTION
HV039N1H	NON-RETURN VALVE EQ W20x1/14" LH 'A'
HV039N02	NON-RETURN VALVE EQ W21.7x1/14" 'A'

Technical data

CODE	GAS	N. FOLDS	CONNECTION	WEIGHT	P1.max
CS090	COMBURENTS - INERT	2	W21,7x1/14" 'A'	3,0	200 bar
CS091	FUELS	2	W20x1/14" 'A'	3,0	200 bar
CS093	COMBURENTS- INERT	3	W21,7x1/14" 'B'	5,0	200 bar
CS094	FUELS	3	W20x1/14" 'A'	5,0	200 bar

