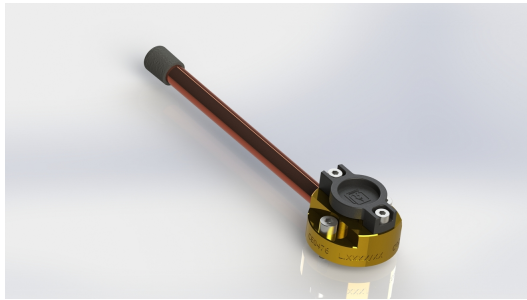




Medical gas devices



DIN 13260 - BS 5682 base block



Organismo Notificato n. 0476
Notified Body nr. 0476

Product description

The DIN 13260 - BS 5682 base block or base is used to mount the relevant terminal units. The base is made of brass with a Ø 10 mm weld-on inlet pipe. The base block has a cut-off to stop gas leaking out when servicing. All materials are oxygen compatible, supplied clean and free of any traces of oil, grease or dust.

Normatives

UNI EN ISO 9170-1 | UNI EN ISO 9170-2 | DIN 13260-2 | BS 5682 | UNI EN ISO 15001

Components

- Body made of brass.
- Ø 10 mm copper inlet pipe.
- EPDM PEROX O-Ring.
- Stainless steel springs.

Technical data

CODE	GAS	INLET CONNECTION	WEIGHT
HP090	O ₂	Ø 10 mm copper pipe	0.24 kg
HP091	Air	Ø 10 mm copper pipe	0.24 kg
HP092	Vac	Ø 10 mm copper pipe	0.24 kg
HP093	N ₂ O	Ø 10 mm copper pipe	0.24 kg
HP094	Air-800	Ø 10 mm copper pipe	0.24 kg
HP095	CO ₂	Ø 10 mm copper pipe	0.24 kg