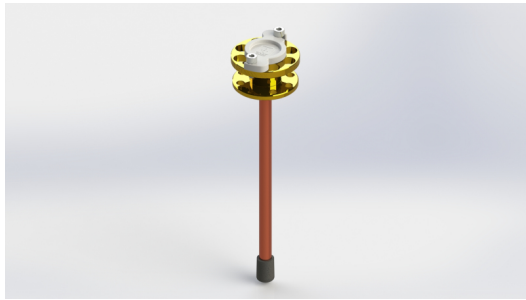




Medical gas devices



LEAF BASE BLOCK- REAR PIPE

Product description

The base block of the LEAF terminal unit line is suitable for all sockets of all standards: NF-S 90-116, BS 5682, DIN 13260-2 and SS 8752430; simple installation and quick maintenance, the base block is adjustable in 6 positions thanks to the provision of n° 6 holes for fixing, once the base block is fixed the

socket can be rotated to the correct position; the pipe is rear the base block.



Organismo Notificato n. 0476
Notified Body nr. 0476

Normatives

UNI EN ISO 9170-1 | UNI EN ISO 9170-2 | UNI CEI EN ISO 13485 | UNI EN ISO 15001

Components

- Base block in brass.
- AISI 316 Gas specific gear.
- EPDM perox O-Ring.
- Copper pipe outer Ø8 mm.
- ABS cap.

Technical data

CODICE	GAS	Ø TUBO	WEIGHT
HP300A4RP	Air	Ø 8 mm	0.13 kg
HP300A8RP	Air-800	Ø 8 mm	0.13 kg
HP300ARRP	Ar	Ø 8 mm	0.13 kg
HP300CDRP	CO ₂	Ø 8 mm	0.13 kg
HP300M1RP	Mix O ₂ /N ₂ O	Ø 8 mm	0.13 kg
HP300N4RP	N ₂	Ø 8 mm	0.13 kg
HP300NORP	N ₂ O	Ø 8 mm	0.13 kg
HP300O9RP	O ₂ 93	Ø 8 mm	0.13 kg
HP300OXR	O ₂	Ø 8 mm	0.13 kg
HP300VARP	Vac	Ø 8 mm	0.13 kg