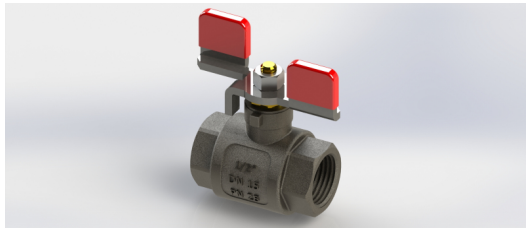




Medical gas devices



Shut-off valve

Product description

The service shut-off valves are necessary to shut off each riser, each branch, each loop of a medical and empty gas system; the purpose of interrupting the supply line of the flow of each specific gas is to proceed with any maintenance or interventions downstream of the valve itself, the valve can have dimensions from 3/8" up to 2"; together with the valve it is possible to purchase separately fittings in three pieces for pipes to be welded from Ø 10 mm up to Ø 54 mm. Starting from the Ø 3/4" valve, the three-piece fittings are equipped with O-Rings for a better seal under pressure. All materials are oxygen compatible, supplied clean and free from oil, grease or dust.

Normatives

UNI EN ISO 15001

Technical data

| CODE | VALVE DIMENSIONS | P. max |
|-------|------------------|--------|
| H0650 | 3/8" | 63 bar |
| H0651 | 1/2" | 50 bar |
| H0652 | 3/4" | 50 bar |
| H0654 | 1" | 45 bar |
| H0655 | 1" 1/4 | 30 bar |
| H0656 | 1" 1/2 | 25 bar |
| H0657 | 2" | 20 bar |